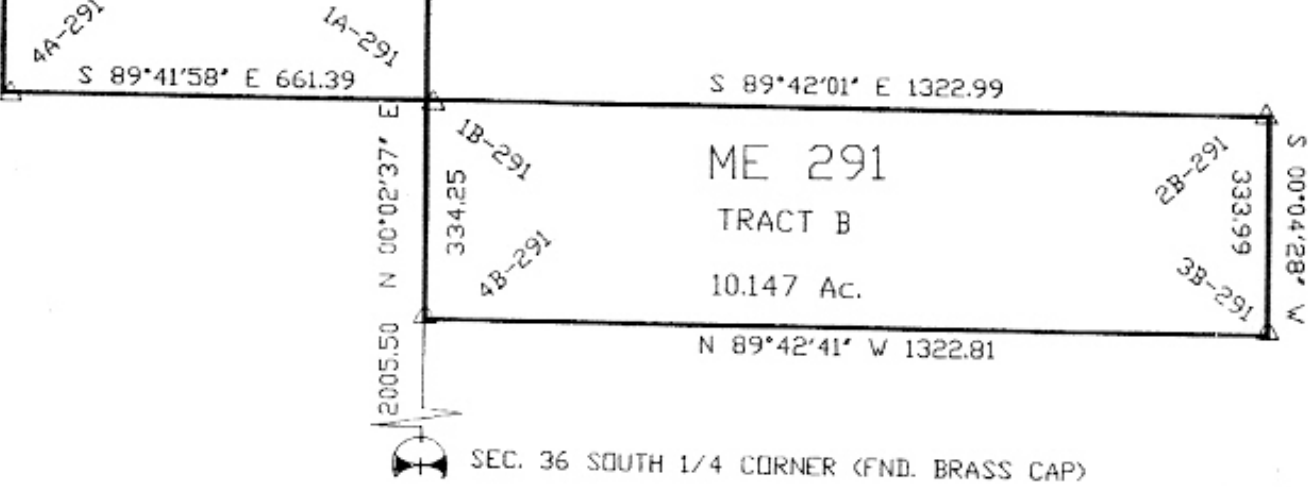


DATE OF SURVEY: OCT. 1995
 BASIS OF BEARING: SOUTH BOUNDARY OF SECTION 36
 T.65., R.4W., P.M.M., S. 89°46'00\"/>

LEGEND

△ SET 5/8\"/>



SEC. 36 SOUTH 1/4 CORNER (FND. BRASS CAP)

I, the Chairman of the Board of County Commissioners, hereby certify that the accompanying Certificate of Survey has been duly reviewed, and has been found to be consistent with the requirements of the subdivision and Platting Act, Sections 78-3-101, et. seq., M.C.A. as it pertains to the use of exemptions from subdivision review. Dated this the ___ day of _____, 19__

 Chairman, Board of County Commissioners

CERTIFICATE OF FILING BY CLERK AND
 STATE OF MONTANA)
 COUNTY OF MADISON

Filed for record this 5TH day of Aug
1996 At 4:00 o'clock PM in
 COUNTY Madison AND RECORDER
 MADISON COUNTY

CERTIFICATE OF SURVEYOR

I ALEX G. ZBITNOFF, LAND SURVEYOR REGISTERED IN THE STATE OF MONTANA, DO HEREBY CERTIFY THAT THIS SURVEY WAS COMPLETED UNDER MY DIRECTION DURING THE MONTH OF November, AND THAT THIS PLAT ACCURATELY REPRESENTS THE RESULTS OF THAT SURVEY.

IN WITNESS WHEREOF, I HAVE HEREUNTO SET MY HAND AND SEAL, THIS 2 DAY OF March, 1996

(Signature)
 Alex G. Zbitnoff
 Land Surveyor



FEE: \$6.00

Reviewed for errors and omissions this the day of August, 1996 pursuant to 78-3-611 (2) (a), M.C.A.

(Signature)
 Examining Land Surveyor